



## MOUNTAIN BIKE RIDERS

- Be prepared to ride across grass
- Be careful on rocky and steep sections
- Give way to pedestrians and horse riders by stopping and moving to the side of the track
- Cyclists will manage about 6km per hour including rests
- Cyclists will find it easier to stay on the road when the trail diverts to the verge
- For mountain bike tours phone Noosa Bike Hire & Tours on 5474 3322
- For more information on bike riding in the Noosa area visit an information centre for a Noosa Walking & Cycling Map or visit [www.travelsmartssunshinecoast.com.au](http://www.travelsmartssunshinecoast.com.au)

## BUSH WALKERS

Wear sturdy comfortable foot wear and sun protection .

The Noosa Parks Association – Noosa Trampers and Cooooloala Bushwalkers occasionally hold guided walks on the trail. For more information go to [www.noosaparks.org.au](http://www.noosaparks.org.au)



## HORSE RIDERS

### YOUR SAFETY IS OUR CONCERN

- **THE TRAIL IS SUITED TO EXPERIENCED HORSES AND HORSE RIDERS ONLY.** On the trail you will need to: ride along roads shared with vehicles; cross small wooden bridges; cross over and under railway lines; open and close gates; beware of trail bikes in the State Forest; and remember the trail is shared with mountain bike riders and bushwalkers
- Small stalls are available for two nights (max) at Cooran Riders Grounds, Pomona Showgrounds and Kin Kin Sports Grounds
- Place manure in pits provided
- Troughs, water tanks and hitching rails are located at all rest areas. During drought water tanks may be empty
- Horses are not permitted on the sports fields at Kin Kin and Cooran or in Cooroora Creek Park except on the marked trail. Also they are not permitted in the water at Lake Macdonald as it is the water supply for residents throughout the area
- Do not ride any more than two abreast along constructed roads as per section 157 of the Traffic Regulation 1962
- Horses and riders must be fit to complete trails 2, 3 & 4
- It is recommended horses be shod
- Hitching rails are located at the rear of the Pomona Hotel.
- For safety reasons please do not ride into the town of Cooroy but start/finish at the float parking area on Mary River Road, Cooroy, adjacent to The Plantation (142 Mary River Road) - refer to Z on the map
- When in a State Forest and you hear a trail bike coming your way, ride to a section of track that has a reasonable sight distance in the direction the bike is coming. At this point stop and wait so the trail bike rider has plenty of time to see you, do not keep riding. Dismount if your horse is agitated



## CODE OF CONDUCT

When out riding and walking on bushland tracks and trails please observe the following:

### Respect the environment:

- Do not take shortcuts or form new tracks
- Bike riders – do not skid
- Avoid muddy tracks
- Obey the signs and stay on permitted tracks
- Do not stray into neighbouring private land or go exploring

### Respect other track users:

- Control your bicycle
- Walkers and cyclists give way to horse riders by moving to the side of the track

### Be safe:

- Plan ahead
- Enjoy your walk/ride with friends
- If riding wear a helmet and ride within your ability and according to track conditions
- Carry emergency repair equipment and a mobile phone
- Drink plenty of water
- When on sealed or gravel roads keep to the verge
- Walking or riding at night is not recommended due to obstacles and disturbance caused to residents

## NOOSA BIRD TRAIL



A Bird Observing booklet for beginners on the Noosa Trail Network is available, or visit [www.sunshinecoast.qld.gov.au](http://www.sunshinecoast.qld.gov.au)

Seven of the 32 Noosa Bird Trail sites are located on the Noosa Trail Network. For further information visit the Sport and Fitness page on council's website or an information centre for a Noosa Bird Trail brochure.



## BUSH CAMPING

### Cootharaba Views Lookout and Middle Lookout:

- Maximum group size permitted is four persons
- No facilities are provided
- No fires are permitted. Fuel stoves must be used for cooking
- Carry all rubbish with you, do not bury it
- Bury all faecal matter and toilet paper in a hole at least 15cm deep. Carry sanitary pads and tampons as they do not decompose
- One night only.

### Cooran Riders Grounds:

- Camping is permitted at the back of the Cooran Riders Grounds
- For enquiries, group bookings, a key for toilets and showers (\$20 deposit required), payment of camping fees (\$6 per night) & club opening hours, phone Ron at the Cooran Rec Club (licensed) on 54851363.

### Kin Kin Sports Grounds:

- Bush Camping for 2 nights only is available (\$6 per night)
- Powered sites are available (\$20 per night)
- \$20 deposit is required for key to toilets/showers
- Bookings essential, phone p: 5485 4103.

### Camp Cooroora (scout camp):

- Bookings must be made in advance, 5442 5285.

### Pomona Caravan Park and Pomona Showgrounds:

- Call in and pay designated fee at the caretaker located within the Pomona Caravan Park adjacent to the showgrounds
- For bookings p: 5485 1477 or 0438 851 142.

### When camping at Camp Cooroora, Pomona Caravan Park or the Pomona Showgrounds please:

- Uphold rules of the campsite
- Camp where caretaker designates
- Pay the prescribed camping fee
- No dogs allowed
- Horses to be placed in the designated yard area.

## WALKS & RIDES OVER 17KM

- **Sleep hill climbs will be encountered (see elevation diagram)**
- **A high level of fitness for people and horses is required.**

### Trail 3 – Cooran to Kin Kin via Woodum Forest Reserve (22km one way)

**Bushwalkers & Mountain Bike Riders:** park at James McKane Memorial Lookout, walk/ride 17 km downhill to Kin Kin via Woodum National Park and Johnstons Lookout. Stay overnight at Kin Kin and return uphill. If possible organise someone to collect you in Kin Kin!

For an extra challenge start at Cooran.

**Horse Riders:** park horse floats at Cooran Riders Grounds or Kin Kin Sports Grounds.

Warning: The ride from Cooran to James McKane Memorial Lookout is extremely steep, horses must be fit.

### Trail 2 – The Scenic Trail (25kms one way)

The spectacular views along this trail make it worth the effort. This trail provides a link between trails 3 and 4.

### Trail 4 – Kin Kin to Lake Macdonald (25km one way)

This trail crosses a variety of terrain, passes through a rainforest and provides some spectacular views. Along trail 4 there is a section marked Alt 4. This alternative route is very boggy and has not been modified. This route is only accessible in dry weather and traverses the original road built in 1870 to connect Tewantin to Gympie, via Cooran.

### Trail 2 & 3 Noosa Hinterland Circuit (40km circuit)

**Bushwalkers:** This circuit can be completed as a leisurely 3-day walk: Park at James McKane Memorial Lookout, walk downhill to Kin Kin via trail 3 and camp overnight or stay at the hotel.

Next day, walk to Middle Lookout via trail 2, camp overnight, then return to James McKane Memorial Lookout via the rainforest in Woodum National Park on trail 3. High level of fitness required.

**Horse Riders & Mountain Bike Riders:** Ride trail 2 or 3 one day, camp overnight at Kin Kin or Cooran, return via trail 2 or 3. Endurance riders could ride this circuit in one day.



### Trail 3, 4, 5 & 7 (62km circuit)

**Bushwalkers:** This circuit can be completed in 4 to 5 days depending on your level of fitness. Consider splitting the section between Kin Kin and Lake Macdonald with a detour to Middle Lookout where camping is permitted (Note: maximum group size is 4 people as there are no facilities). The walk between Cooran and Kin Kin (22km) is challenging with the steepest hill climb/descent on the whole trail network located between Cooran and James McKane Memorial Lookout. If you are really tired there is a short cut into Kin Kin from Pender Creek Road along Sister Tree Creek Road although be aware of the traffic (not suited to horse riders) and you will miss the views of the Kin Kin Valley provided along the unformed section of Perseverance Road.

**Bike Riders:** May complete this circuit in one day subject to fitness levels.

**Horse Riders:** It is recommended you split the circuit in half with a stop over at Kin Kin or Pomona, subject to your horse's fitness.

## WALKS & RIDES 9 TO 17KM

- **A moderate level of fitness is required.**

### Trail 1 – The Kin Kin Countryside Loop (14km circuit)

Stroll/ride through the delightful countryside of the Noosa hinterland. Have a leisurely picnic at either Sheppersons Park or Grady's Park. This trail is ideal for bird watching.

### Trail of Trail 2 & 3 – James McKane Memorial Lookout to Middle Lookout (16km circuit)

Park at James McKane Memorial lookout. Walk to Middle Lookout via the rainforests of Woodum National Park and return via the Arabian stud on Ewatts Road, or vice versa.

### Trail 3 & 4 – Lake Macdonald to Middle Lookout (10km one way)

Park at Kookaburra Park, walk 1km to Collwood Road and detour by turning right 200m to Mary River Cod Park and enjoy the views across Lake Macdonald. Continue along trail 4 through Forest Acres residential estate, into Ringtail State Forest, up to Twin Hill Views Lookout (enjoy the views), then follow trail 3 to Middle Lookout. Organise someone to collect you at Camphor Road car park.

### Trail of Trail 3 – Tablelands Circuit (12km circuit)

**Walkers and Cyclists:** Park at James McKane Memorial Lookout. Walk/ride through luscious rainforest, tall open Eucalypt Forest and along quiet country lanes.

Feeling fit? It's an extra 2km to Johnstons Lookout, (4km return).

**Horses riders:** Park and ride from Cooran Riders Grounds.

### Trail 5 Cooroora Trail (9km one way)

This trail provides some wonderful viewing of Mt Cooroora and Mt Cooran, and is largely located through Tuchekei National Park. Try out one of the delightful cafes at either Pomona or Cooran. Horse Riders take care when crossing the railway lines at both Cooran and Pomona.

### Trail 7 Mac 'N' Back (15km one way)

A relatively flat picturesque trail. The trail crosses Six Mile Creek and can easily be completed as a day walk. Be aware trail bikes are permitted in Yural State Forest and this trail crosses Yural Forest Drive which has a speed limit of 100km/hr, please take extra care when crossing.

### Trail 8 – Cooroy Wanderer (11km one way)

A flat easy walking trail. For safety, horse riders are asked not to ride into the town of Cooroy but to start/finish at the float parking area on Mary River Road.



## WALKS & RIDES 1 TO 5.5KM

### Part of Trail 4 – Kookaburra Park to Mary River Cod Park (1km one way)

Easy one-hour return walk. Nearby Noosa Botanic Gardens are definitely worth a look. Horses are not permitted in the gardens, so tie up at hitching rails provided at Kookaburra Park and walk to the gardens.

### Part of Trail 2 & 4 – Sheppersons Park to Cootharaba Views Lookout (1.7km one way)

Enjoy a picnic lunch and the spectacular views. Reasonable level of fitness required as it is all uphill.

### Part of Trail 3 – Kin Kin Arboretum to Johnstons Lookout (2km one way)

Park at Kin Kin Arboretum, walk across Pomona Kin Kin Road up Western Branch Road until you come to signs for trail 3 on your left. Steep ascent to lookout, reasonable level of fitness required.

### Trail 5 – Mt Cooroora

There is a very steep walk up Mt Cooroora where the famous 'King of the Mountain Race' is held each year. You can walk from along trail 5 or drive to the base of Mt Cooroora and park there. Follow National park walking signs.

### Trail 6 – Cudgerie Loop (5km circuit)

An easy circuit that weaves through the parkland of Cudgerie rural residential estate. Park at Cudgerie Common on Blueberry Drive.



**NO 4WDs, DOGS OR MOTORBIKES ARE PERMITTED ON MANY SECTIONS OF THE TRAIL - FINES APPLY - OBEY ALL SIGNAGE**

## PLEASE REMEMBER

**Gates:** Finding stray cattle and horses can be difficult for farmers and create dangerous traffic hazards. PLEASE ENSURE ALL GATES ARE SHUT. Keeping the trails open and farmers happy depends on you!

**Rubbish:** Take all rubbish with you, do not drop or bury it.

**Public telephones:** Available in the towns and the Kin Kin Living Valley Springs Health Retreat. Mobile phones should not be relied upon.

**Trail closures:** Check councils website for trail closures.

**State Forest:** Noosa Trail Network traverses parts of State Forest. Users of those sections must comply with any regulatory signage located along the tracks and be aware that trail bikes are permitted on state forest management tracks.

**Signage:** Please obey all signs on the trail

After heavy rains do not attempt the trail as tracks become slippery. Always carry a first aid kit and let someone know your plans and expected return time.



## THE LOOKOUTS

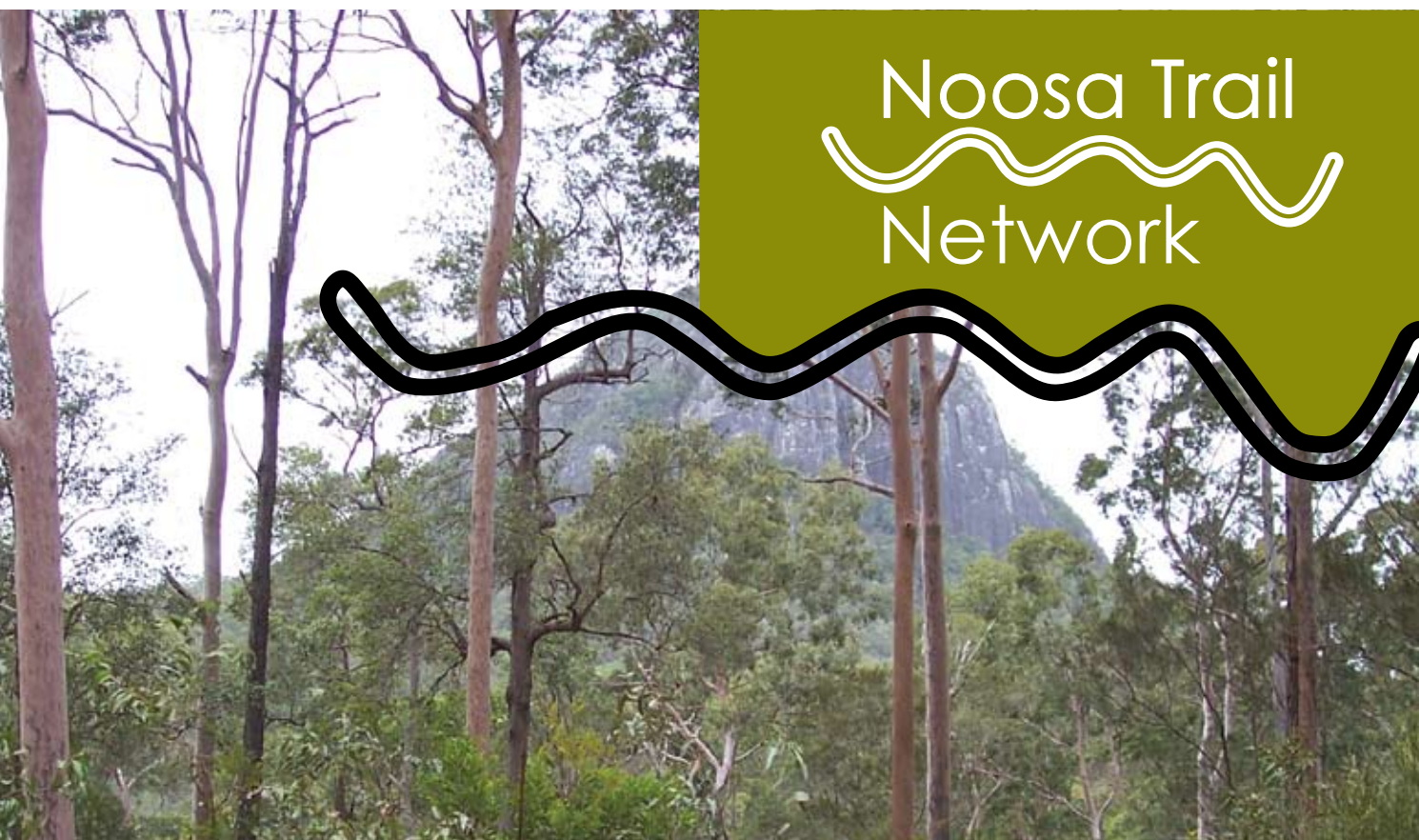
Five lookouts are located along the trail. James McKane Memorial Lookout, Cootharaba Views Lookout, Twin Hill Views Lookout and Middle Lookout offer spectacular views of the coast and hinterland including views of Mt Cooroora, Mt Cooroy, Mt Coolum, Mt Tinbeerwah, Cooooloala National Park, Lake Cootharaba, Lake Cooroibah, Wahpunga Ranges, Kin Kin, Noosa Heads, the Sand Blow and the ocean. Johnstons Lookout provides views of the rolling hills and farms around Kin Kin.

## LAKE MACDONALD

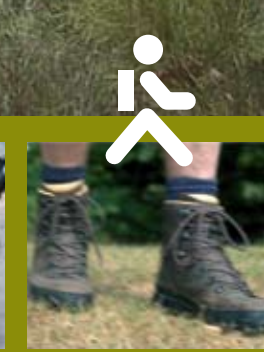
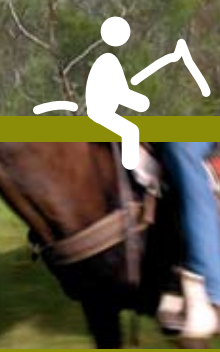
There is a lot to do at Lake Macdonald – visit the botanic gardens, follow the paddle trail, visit the Fearnley Bird Hide or, camp at Camp Cooroora. For further information about Lake Macdonald visit council's website or an information centre for a Lake Macdonald brochure.

## INFORMATION AND HISTORY

Heritage information is provided along the trail, look out for the signs as you walk/ride along. There are also heritage walks located in the towns of Pomona, Tewantin and Cooroy. For further information visit the Heritage Walks page on council's website or an information centre for a heritage walk brochure.



# Noosa Trail Network



Neither the landowner nor Noosa Council accept any legal responsibility for any injury to trail users. The ground has been minimally modified, so encounters with fallen debris, holes, rocks, snakes, mud and grass may be expected and requires due care.

## EMERGENCIES - DIAL 000

If you do not have mobile coverage and require assistance: **DIAL 112**

## MORE INFORMATION

For information visit [www.noosa.qld.gov.au](http://www.noosa.qld.gov.au) Please report any problems to Noosa Council by phoning 5329 6500



Trails for walking, horse riding & mountain biking in the Noosa Hinterland

**FREE MAP INSIDE**



# NOOSA TRAILS

- Trail 1**  
Kin Kin Countryside Loop
- Trail 2**  
Scenic Trail
- Trail 3**  
Kin Kin to Cooran via Western Branch Rd
- Trail 4**  
Kin Kin to Lake MacDonalid
- Trail 5**  
Cooroora Trail
- Trail 6**  
Cudgerie Loop
- Trail 7**  
Mac 'N' Back
- Trail 8**  
Cooroy Wanderer

Trails are not suitable for use in wet weather

# MAP LEGEND

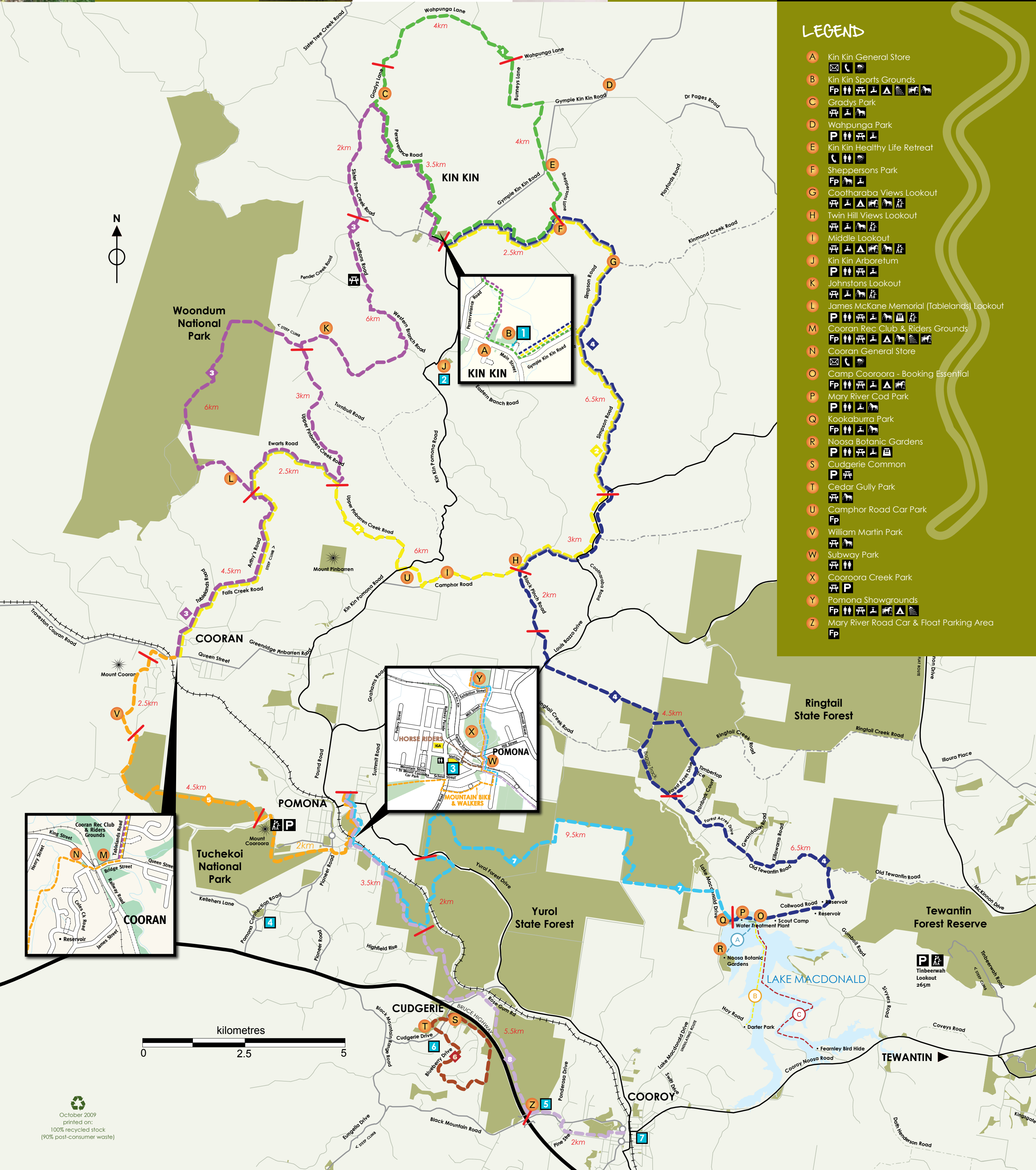
- Major Road
- Dirt Road
- Arterial Road
- Highway
- Canoe Trail 1
- Canoe Trail 2
- Canoe Trail 3
- Foot/Car Parking
- Car Parking
- Camping Grounds
- Snacks
- Drinking Water & Trough
- Picnic Area
- BBQ Facilities
- Public Toilets
- Yard for Horses
- Hitching Rails
- Public Telephone
- Lookout
- Showers
- Post Office

# ACCOMMODATION

- 1** Kin Kin Countryside Hotel p: 5485 4103
- 2** B&B Kin Kin Haven p: 5485 4248  
www.kinkinhaven.com
- 3** Pomona Hotel p: 5485 1187
- 4** Inn the Foothills B&B p: 5485 1028  
www.innthefoothills.com.au
- 5** The Plantation p: 5447 6177  
www.theplantation.com.au
- 6** Cudgerie Homestead p: 5442 6681  
www.cudgerie-noosa.com
- 7** Cooroy Motel p: 5447 6444  
www.cooroymotel.com.au

# Noosa Trail Network

walking • horse riding • mountain biking



# LEGEND

- A** Kin Kin General Store
- B** Kin Kin Sports Grounds
- C** Grady's Park
- D** Wahpunga Park
- E** Kin Kin Healthy Life Retreat
- F** Sheppersons Park
- G** Cootharaba Views Lookout
- H** Twin Hill Views Lookout
- I** Middle Lookout
- J** Kin Kin Arboretum
- K** Johnstons Lookout
- L** James McKane Memorial (Tablelands) Lookout
- M** Cooran Rec Club & Riders Grounds
- N** Cooran General Store
- O** Camp Cooroora - Booking Essential
- P** Mary River Cod Park
- Q** Kookaburra Park
- R** Noosa Botanic Gardens
- S** Cudgerie Common
- T** Cedar Gully Park
- U** Camphor Road Car Park
- V** William Martin Park
- W** Subway Park
- X** Cooroora Creek Park
- Y** Pomona Showgrounds
- Z** Mary River Road Car & Float Parking Area

Trail Profiles 1-4



Trail Profiles 5-8



October 2009 printed on: 100% recycled stock (90% post-consumer waste)

