



Accessibility on Stillwater

Stillwater is designed with accessibility in mind. The aisles are spacious, and we have a fully accessible bathroom. Scan the QR code to view further details.



Questions?

How long is the cruise?

Approx. 90 minutes along the Noosa River, with near-silent electric cruising where possible.

What's included?

A welcome beer, wine, or bubbles, plus a shared light nibbles platter. Some items may contain gluten and dairy, so you're welcome to bring your own small snacks.

Can I BYO?

No, Stillwater is fully licensed. After your welcome drink, a selection of beverages are available for purchase. See website for our beverage selection.

Does the cruise run in all weather?

Yes! Our covered deck and open-air areas to ensure comfort in almost all conditions.

Is the vessel wheelchair accessible?

Yes! Stillwater features a spacious layout, fully accessible bathroom ability to accommodate up to 14 wheelchairs.

What days does the cruise run?

Most days, this is subject to booking numbers and weather conditions. You can check the status of our trips on our website..

Can I bring infants or small children?

Due to the peaceful nature of this cruise and being on one level, we ask that you consider other guests if deciding to bring young children or infants.

Cruise Pricing

Depart from	Duration	Adult	Minor (4 - 17 yrs)
Noosa Heads	1½ hrs	\$55	\$39
Noosaville	1½ hrs	\$55	\$39
Tewantin	1½ hrs	\$55	\$39



Book your cruise today. Scan the QR code, call 07 5449 8442 or book online at noosaferry.com/stillwater/sunset

A 15% surcharge will apply on gazetted public holidays. Pricing is valid from 1st March 2025 until 30th June 2025. A minor is 4-17 years inclusive and infant under 4 years.



STILLWATER

Sunset CRUISE





Why Choose Our Stillwater Hybrid Sunset Cruise?

A Boutique Experience

Enjoy a welcome drink upon boarding along with light snacks in a spacious setting. Additional beverages are available for purchase throughout the cruise.

Multiple Departure Locations

We begin our pickup at Noosa Heads, followed by Noosaville and Tewantin.

Explore Upriver

We cruise upstream from the Noosa Marina, then glide back silently towards Noosaville under ePropulsion to enjoy the sunset.

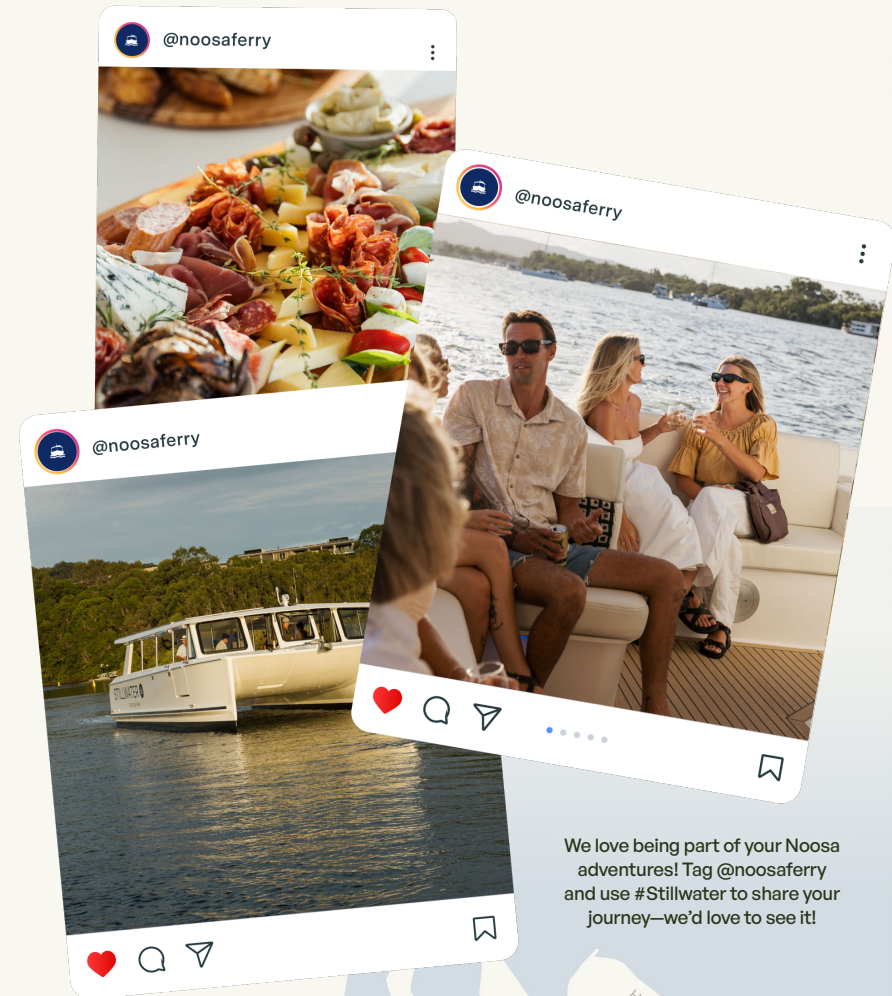
About Stillwater

Locally built by Noosa Marine and designed with sustainability and accessibility in mind, HV Stillwater is Noosa's first hybrid powered commercial passenger carrying catamaran.

Powered by a combination of two low emission Suzuki outboards and one 40KW ePropulsion electric outboard, Stillwater is leading the tourism industry towards environmentally considerate, commercial passenger cruising. Solar panels on the roof charge all batteries on board which operate all electrical systems, including electric bow thruster & outboard.

With a spacious layout, on one single-level deck, Stillwater is also designed with an accessibility focus. Facilities on board are large & accessible, with adequate space to provide a boutique & inclusive cruising experience for all.

Book your cruise today. Scan the QR code, call 07 5449 8442 or book online at noosaferry.com/stillwater/sunset



We love being part of your Noosa adventures! Tag @noosaferry and use #Stillwater to share your journey—we'd love to see it!

